

TOSHIBA

Leading Innovation >>>

Real Life Colour Power that Performs



e-STUDIO 6550C series



e-STUDIO5540c/6540c/6550c

Going faster... while treading carefully.

Up to 1.2 metre banner prints

Blazing colour print
speeds up to 65ppm
colour and 75ppm B&W

Amazing colour scan
speeds of 77spm

Technological innovation is only meaningful when the products created deliver real benefits that enhance our lives and environment.

More than ever, consumers look to products from suppliers that are the result of an "end to end" design culture. Where the ultimate recycling of the product is a significant component of the design and manufacturing process.

The revolutionary new e-STUDIO5540c/6540c/6550c full colour Multifunction Devices (MFD) deliver accelerated productivity with environmental harmony like never before. The result of 130 years of "human centric" innovation, Toshiba has created a powerhouse of engineering excellence, delivering up to 65ppm with unsurpassed clarity in breathtaking colour and 75ppm black and white. They are packed with performance enhancing features you'll love.

Access to Toshiba high-speed colour is easy through the huge, adjustable, 10.4" Super VGA screen with intuitive one-touch access to copying, printing, scanning, faxing and e-filing.

Human Centric design has driven every aspect of the creation of these new MFDs.

Extended duty cycles and increased capacity in paper and toner minimises the need for operator support. The new Self Refreshing (SR) developer system, Toner and Paper replenishment "on the fly" plus the incredibly flexible new e-BRIDGE III architecture delivers a new benchmark in Office Multi Function Devices.

Reach, Range and Richness

The e-STUDIO5540c/6540c/6550c models are engineered to satisfy the increasing input and output demands for colour documents in busy offices environments whilst minimising the impact on the global environment. Importantly, they bring unprecedented image quality, powerful paper handling capacity and versatile scanning functions to your fingertips.



5540c/6540c/6550c

Open Platform – expanding business horizons

Toshiba Open Platform allows IT customisation and integration with third-party applications and peripherals for seamless business workflow in enhanced communication and collaboration.

Versatile Paper Handling

Standard configuration includes 2 x 540 sheet drawers, a stackable 100 sheet bypass feeder and an innovative Split Tandem LCF holding 2320 sheets for a combined total capacity of 3500 sheets. Adding an external Optional LCF expands this to 6000 sheets on line for improved efficiency.

Duplex print sheets up to 320x460mm and 256gsm weight. Even print banners up to 313.4 x 1200mm and special media to 300gsm to provide the flexibility you need.

Direct USB Print & Scan

Simply plug a USB memory drive into the access port and you can conveniently print directly from it or scan to it without using the network or a computer. Supported file formats include PDF, JPEG and Windows Vista XPS.

e-Fine® Image Quality Management

Toshiba engineers developed a new ASIC to provide superb clarity and rich text rendering in all print, scan and copying jobs. The new patented process created was named e-Fine®. This combined with the new micro fine, low temperature fixing toners and Australian built Raster Imaging Technology and Colour Management delivers exceptional image quality with smooth curves and deep rich solids in text and graphics.

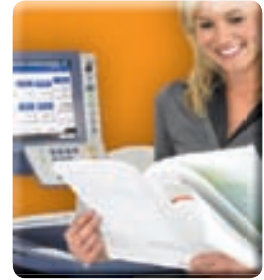
Flexible Finishing Options

Two finisher options are available. Choose from a 50-sheet multi-position stapling finisher or a saddle-stitched finisher that can create 60-page booklets automatically.

The ergonomically designed SVGA TFT 10.4" full colour control panel is easy to read and can be adjusted to avoid distracting glare or compensate for poor lighting conditions.



With colour print speed up to 65 ppm, exceptional graphic art quality colour is now being delivered at the speed of business colour.



"On the Fly" technology improves productivity. Toner cartridges can be replaced while the machine is running whereas a tandem LCF allows paper to be replenished without interrupting the print run.



7 Human Centric Design...

Toshiba's 7 core elements



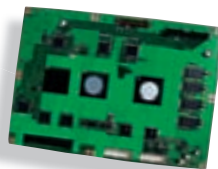
1. Environmental efficiency



The future and our environment are a challenge to all of us. Toshiba is a leader among Japanese electronics manufacturers in identifying and implementing practices that reduce the environmental impact of business.

This new range of MFD's built in our ISO14001 compliant facilities meet or exceed global standards like Energy Star, RoHS and the German Blue Angel. Design innovation further reduces energy consumption with Twin IH (Induction Heating) and programmable sleep modes embedded to provide sensible efficiencies.

2. Performance



Breaking the boundaries in image quality and dependability, vivid images are produced in crisp 1200dpi resolution thanks to Toshiba's new formula toner and SR (self refreshing) developer technology.

Efficiency improvements with new ERU (Easy Replaceable Units) match long lasting consumables – extending duty cycles and maximize performance on a wide variety of media types.

Toshiba's own Australian developed RIP technology is integrated with the new generation e-BRIDGE controller to deliver clarity and colour consistency.

3. Productivity

Save time and improve workflow from initial input to final output. For instance, anyone can easily replenish the toner and add paper "on the fly". Therefore, print jobs are not interrupted and are finished faster.

Paper usage can be reduced by selecting duplex print mode and high speed scanning through the standard RADF allows connected MFD's to send files to your network in a variety of formats including highly efficient SLIM PDF.

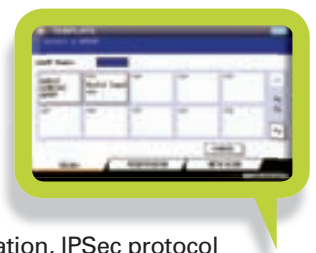
New whisper quiet finishers employ "Active Drop" technology to slash processing time for continuous stapling while "2D" resistors ensure accurate hole-punching, even at high speed.

4. Security

Security is a prime concern for every organisation, with that in mind, the e-STUDIO5540c/6540c/6550c vastly improves management of access privilege levels. Therefore, safe IEEE802.1X LAN user authentication, IPSec protocol and IP/MAC address filtering all work to prevent malicious access and tampering.

Keep confidential documents password protected from prying eyes and discourage illegal copying with customised security watermarks. Encrypt PDF files while you scan by choosing from three levels of encryption up to 128-bit AES.

Avoid HDD data leakage with an optional data overwrite enabler and prevent data loss even if the HDD is stolen. You can even set passwords on e-filing box templates. Combine all these measures and this is a total package delivering absolute peace of mind



5. Management

New Enhanced Role Based Access Control (RBAC) makes it easy. You control the costs by deciding who uses it and what they can use, even with casual or temporary users.

For the IT professional, the cloning function saves user data, setup data and SRAM data to USB memory so the setup of other devices in the office can match. Similarly, you can import or export customised printer driver settings to any PC on your network.





It's not about the volume of information created in your office; it's about how you find the information that is important. The challenge then is how to use the data in a meaningful and timely manner.

6. Integration

At its heart, e-STUDIO's open architecture expands connectivity and simplifies integration within existing network environments. e-Bridge Open Platform enables compatibility with a host of third-party applications such as Microsoft Sharepoint, Exchange and many others.

DPWS (Device Profile for Web Service) protocol simplifies connection and identification of networked devices.

The Meta Scan function allows attachment of additional information (XML data) to files when using scan to functions or file scanning. The attached data can then be accessed by external workflow systems.

Toshiba's e-BRIDGE Solution suite empowers your employees with flexible tools to make them more productive. These include:

e-BRIDGE Re-Rite™

e-BRIDGE Fleet Management System

Toshiba ID Gate

Toshiba Audit

7. Simplicity

The e-STUDIO5540c/6540c/6550c are intuitively designed with a large 10.4" SVGA TFT colour touch screen that confirms settings and displays scan results at a glance. Authorised users can also customise the menu with templates for one-touch user-friendly operation.

Simply walk-up to scan and print direct with USB memory, a huge range of formats are accepted including PDF, TIFF, JPEG, XPS, Secure PDF and Slim PDF.

Paper size is automatically detected and super accurate sensors can determine "Thick 1" paper weight fluctuations and make fine performance adjustments.



5540c/6540c/6550c

Business today is about working smarter not harder, using tools that are honed for the job to help meet the ever-increasing expectations of productivity and environmental responsibility.

5540c/6540c/6550c

Tilting, full colour, 10.4" Super VGA TFT touch panel increases visibility, making the devices easier to use and access

Set permissions for colour printing and copying either by department or individually to track and manage costs

Professional document finishing, including stapling with Active Drop technology, hole punch with accurate 2D registration and saddle-stitch

Print from and scan to USB Flash Drive

A standard Stackless Automatic Duplexing Unit (ADU) handles two-sided originals quickly and easily to reduce paper usage

Change toner and paper "on the fly"



Bypass Tray handles up to 300g/m² stock

Double-siding of thick paper stock up to 256g/m² is supported from the top two cassettes

Using all five sources the e-STUDIO has a maximum paper capacity of up to 6,000 sheets



Build to order – flexible configuration



Staple Finisher



Saddle-stitch Finisher



Data Overwrite Enabler



IPSec Enabler



Meta Scan Enabler



External Interface Enabler



Exit Tray

Hole Punch

All-in-one e-Bridge Controller



Large Capacity Feeder (LCF)

Options	
Fax	Fax Board Fax 2nd Line Board
Wireless	Wireless LAN Adapter Antenna
Other	EFI Controller Harness Kit for Coin/Card Controller e-BRIDGE ID-Gate Image Acceleration Board

Examples:



a.



b.



c.



d.

Copy Features

- > Job Templates
- > Job Reservation (Scan Ahead)
- > Magazine Sort (Booklet-Making Mode)
- > Mirror Image
- > Negative / Positive
- > Page Numbering
- > Security
- > Sheet Insertion
- > Weekly Timer
- > X-Y Zoom
- > 2-in-1, 4-in-1, 8-in-1 Duplex
- > Omit blank page
- > Proof copy
- > Job build
- > Outside original erase

Print Features

- > Cover Sheet
- > DocMon (Document Monitor Utility)
- > Duplex Printing
- > Hole Punch
- > Magazine Sort
- > Mixed-Size Printing
- > Private Print
- > Proof Print
- > Saddle-Stitch
- > Booklet Mode
- > Custom Margin
- > Custom Paper Size
- > Banner Print
- > Omit Blank Page
- > Scheduled Print
- > Sheet Insertion
- > Stapled Sets
- > Store to e-FILING
- > Watermark
- > Advanced Colour Settings
- > User Pre-sets (with sharing)
- > ICC Profile Support

Scan Features

- > Scan-to-File
- > Scan-to-e-FILING
- > Scan-to-Email
- > Scan-to-USB
- > TWAIN Compatible
- > Tiff, PDF, Slim PDF, XPS, (Single/Multiple)
- > PDF security
- > Scan preview
- > Omit blank page
- > Outside original erase

Fax Features

- > Address Book (1,000 Addresses)
- > Automatic Redial
- > Broadcasting (Max.1,000 Destinations)
- > Chain Dialing
- > Delayed Transmission
- > Direct Transmission
- > Double-Sided Scanning and Reception
- > Dual Access
- > Group Dialing (Max. 200 Groups/400 Destinations/Group)
- > Optional Second Line
- > Network Faxing
- > Polling
- > Priority Transmission
- > Public Mailbox (F-Code)
- > Route Fax to Folder/Email/

Device Management Features

- > Access Restrictions
- > Automatic Supply Ordering
- > Department Code Enforcement
- > Email or Fax Notification for Counters and Preventative Maintenance
- > Email Notification for Service Calls
- > TopAccess Device Management Utility

e-Filing Features

- > TX / RX Reporting
- > Auto Duplex Reception
- > Tray Selection Reception

GENERAL

Type	Console
Maximum original paper size	A3
Print/copy speed (A4)	Colour: 55/65/65 ppm, B&W: 55/65/75 ppm
Paper input capacity (80g/m², A4)	Standard: 540 sheets x 2 (Drawer), 2320 Sheet Tandem LCF, 100 sheets (Stack Feed Bypass)
	Optional: 2,500 sheets (LCF)
Paper size & weight	Drawers: A5-R — 320 x 460mm, 64 — 256g/m ² Stack Feed Bypass: A6-R — 330.2 x 482.6mm, 64 — 300g/m ² , TAB Sheet, Post Card 100x148mm, Banner Paper 313.4x1200mm 64 — 300g/m ² Stackless A5-R 320 x 460mm / 64 - 256gsm A5R-A3, 100 sheet (1000 continue mode) 1>2, 2>2, 2>1, 35-209gsm (simplex), 50-157gsm (duplex)
Auto Duplex Unit	80GB+ (Shared) / Main memory: 1GB, Page Memory: 1GB
RADF	Approx. 70 sec from low-power mode Max. 2.4kW (220-240V)
Hard disk drive/memory	980 x 698 x 1540/1390mm (control panel max/min adjustment)
Warm-up time	243kg
Power consumption	Energy saver, Weekly timer, 12,060 templates
Dimensions (W x D x H)	
Weight	
Special Features	

COPYING FUNCTIONS

Original size	A3 — A5-R
Copy size	Drawers: A5-R— 320mm x 460mm, SFB: A6-R —320 x 460mm,
Resolution	Scanning: 600 x 600 dpi, (10 bit/1024 levels) Copying: 600 x 600 dpi, 8 bit (Full colour/BW) 2400 x 600dpi with smoothing (BW)
Original scanning speed	60 spm (A4)
First copy time	Min. 5.3/5.3/4.6 sec. (B&W), Min. 6.5/6.5/6.5 sec. (Full colour)
Multiple copies	1 to 999 sheets
Colour mode	Auto Colour Selection (ACS), Full Colour, B&W, Twin Colour, Mono Colour,
Copy mode	Text, Text/Photo, Photo, *Printed Image, *Map, *Image Smoothing * Not available in all colour modes.
Reproduction Ratio	25% to 400% (1% Increment) (Glass) 25% to 200% (1% Increment) (Original on RADF) Automatic/Manual (11 steps)
Exposure control	
Major features	
•Proof •Job Build •Omit Blank •Page Outside Erase •2 in 1/4 in 1/8 in 1(Duplex) •Rotation •Alternation •Annotation •X-Y Zoom •Trim/Mask •Magazine Sort •e-Filing •Job Reservation •Book Center Erase •Image Shift •RGB Adj. •Background Adj. •Paper Volume indication	

PRINTING FUNCTIONS

CPU	1.5 GHz (Shared)
Hard disk drive	80GB+ (Shared)
Print engine resolution	600 x 600 dpi (8bit), 1200x1200 dpi
Supported OS	Windows XP/2003 server/Vista/7/2008 Server/2008 Server R2 (32, 64 bit) Mac OS X 10.2 or later UNIX (SUN Solaris 2.6, 2.7, 7.8, 8, 9, 10 HP-UX (10.20, 11x), IBM AIX (4.3.3), Linux, SCO, CUPS V.1.1.15, AS400 (9.00, WCD), SAP (R3), PCL)
Interface	Standard: 10/100/1000Base-T, USB 2.0/(Hi Speed USB) Option: IEEE802.11b/g (Wireless LAN module)
Network OS	Windows 2003 server/Vista/2008 Server/2008 Server R2, Citrix MetaFrame/Presentation Server 4.5/Presentation Server 4.5 FP/XenApp 5.0/XenApp 5.0 FP, NetWare 6.5 (NDPS)
Network protocols	TCP/IP (IP v4/v6), IPX/SPX, Ether Talk, AppleTalk PAP, NetBIOS over TCP/IP, Configurable Raw Ports (16), SMB, LPR/LPD, IPP, Port9100 PCL6 Emulation, PostScript3 Emulation, XPS
PDL	Source Profile: RGB/CMYK (16 each). Output Profile: CMYK (64).
ICC Profile	PDL Supported: PS, XPS. Printer Driver Customisation (PDC) Tool, e-BRIDGE Colour Profiler
Major features	
•Universal Print Driver (PS/PCL) •Tandem Printing •Multiple Overlay •Job Skip •Postscript Overprint •One Touch Templates •Scheduled Print Job •Private Print •Proof Print •Watermark Printing •N-up Printing •Magazine Sort •Image Overlay •Booklet Printing •Tab Paper Printing •Custom Paper •Save to Box (e-filing) •USB Direct Print •Secure Pattern Printing •Banner Printing (305 x 1200mm) •Poster Print •Centre Folding •2 in 1 Magazine Sort •Saddle-Stitch Booklet	

SCANNING FUNCTIONS

Scanning speed (A4)	Colour/B&W: Up to 77 spm (300 dpi)
Scanning mode	Auto Colour Selection (ACS), Colour, Grayscale, B&W
Scan format (Colour)	PDF-Multi/Single Page, TIFF-Multi/Single page, XPS-Multi/Single Page, JPEG
Scanning resolution	600/400/300/200/150/100 dpi
Compatibility	TWAIN, Remote TWAIN, WS Scan (Toshiba WIA)
PDF Security	Password: User, Master. Encryption: 40 bit RC4, 128 bit RC4/AES. Authority: Print, Change, Extract, Accessibility
Major features	
•2-sided •Rotation •Mixed Size Originals •Email •Network (SMB, FTP) •e-Filing •Direct to USB •Scan Preview •Omit Blank Page •Outside Original Erase •Copy and File •Address Book •LDAP •Browse to Shared Folder	

ELECTRONIC FILING FUNCTIONS

User box	User: 200, Public: 1
Number of folders	100 folders per Box
Number of documents	400 documents per Box/Folder
Number of pages	200 pages per document
Input to box (Multi agent)	Copy & Box, Print & Box, Received Fax to file & Box, Received Hax to File & Box (w/o Sub No.), Received Fax to Email & Box, Received Fax to Fax/Hax relay & Box, Received Hax to Hax reply & Box, Fax to Mailbox & Box, Scan to file & Box, Scan to email & Box
Box N/W access applications	Web Browser, TWAIN driver, File Downloader
Functions	Thumbnail View & Print

INTERNET-FAX/NETWORK-FAX FUNCTIONS

Compatibility	T.37 (Simple Mode)
Drivers	Windows XP/Vista/7/Server 2003/Server 2008/Server 2008 R2 (32 & 64bit)

Major features	
•Incoming Fax Routing to file/email (mailbox, TSI) •Custom Cover Page •Address book •Broadcasting	

NETWORK/DEVICE MANAGEMENT UTILITY

TopAccess •TopAccess DocMon •Address Book Viewer •HP Openview (Plugin) •IBM Tivoli (Plugin) •EFMS (optional)	
---	--

DISTRIBUTED BY

SOFTWARE

- e-BRIDGE Re-Rite (Opt.)
- File Downloader •Auto email jobs, events, total counter, PM and service calls

AUTHENTICATION

Device Admin	6-128 Digit (Alphanumeric) with invalid account block
Black free Mode	Access code only required for colour use
Department Codes (1000)	Copy, fax, print, scan (with user limits and reporting)
(1 - 63 digit Alphanumeric)	
User codes (10,000)	MFD Local, LDAP, WINDOWS DOMAIN
Role Based Access (10,000)	User role control (Copy, Fax, Internet fax, Scan, Print, e-FILING, Address Book, Templates, Colour/Mono)
	SMTP (Plain/Login)/CRAMMD5/Digest-MD-5/Auto, STARTTLS/OverSSL, POP before SMTP) LDAP Ver.3.0 (SASL/PLAIN/CRAMMD5/Digest-MD5/Kerberos)
	HTTP, IPP, LDAP, SMTP, POP, FTP
Scan to Email	Private Print (63 character alphanumeric)
	200 user boxes (5 digit pin)
	12,060 templates (5 digit pin)
	IEEE 2600.1
SSL	
Print	
e-Filing	
Templates	
High Security Mode	

OPTIONS

Finisher MJ-1103	
Speed (A4)	Non-sort/Group/Sort/Single Staple/Hole punch Colour: 55/65/65 ppm, B&W: 55/65/75 ppm
Capacity (80g/m²)	Stationary Tray: Approx. 250 sheets (A4, B5, A5-R), Approx. 125 sheets (A4-R, B4, A3, B5-R, FOLIO) Finishing Tray: Approx. 3,000 sheets (A4, B5), Approx. 1,500 sheets (A4-R, B4, A3, B5-R, FOLIO) Multi-position (3-kinds) Finishing Tray: Approx. 150 sets or 2,000 sheets (A4, B5), Approx. 75 sets or 1,000 sheets (A4-R, B4, A3, FOLIO)
Staple position	
Staple	617 x 603 x 1085mm Approx. 40kg
Dimensions (W x D x H)	
Weight	
Finisher MJ-1104	
Speed (A4)	Non-sort/Group/Sort/Single Staple/Hole punch Colour: 55/65/65 ppm, B&W: 55/65/75 ppm
Capacity (80g/m²)	Stationary Tray: Approx. 250 sheets (A4, B5, A5-R), Approx. 125 sheets (A4-R, B4, A3, B5-R, FOLIO) Finishing Tray: Approx. 3,000 sheets (A4, B5), Approx. 1,500 sheets (A4-R, B4, A3, B5-R, FOLIO) Multi-position (3-kinds), Saddle stitch Finishing Tray: Approx. 150 sets or 2,000 sheets (A4, B5), Approx. 75 sets or 1,000 sheets (A4-R, B4, A3, FOLIO) Approx. 50 sets (64-80g/m ² , A3/B4/A4-R)
Staple position	
Staple	617 x 603 x 1,085mm Approx. 70kg
Dimensions (W x D x H)	
Weight	
Hole Punch Unit MJ-6102E/N/F	
Dimensions (W x D x H)	112 x 573 x 323 mm
Weight	Approx. 7kg
Finisher Guide Rail KN-1103	Required by MJ1103/4
Staple STAPLE-2400	For MJ1103/4 (Staple)
Staple STAPLE-3100	For MJ-1104 (Saddle)
Large Capacity Feeder MP-2501	
Paper supply (80g/m²)	Approx. 2,500 sheets
Paper size	A4 (64 — 256 g/m ²)
Dimensions (W x D x H)	360 x 552 x 542 mm (LCF only)
Weight	28.5 kg
FAX Unit GD-1270	
Compatibility	Super G3, G3
Number of lines	1 line (2nd line is optional)
Modem speed	Max. 33.6k bps
Data compression method	JBIG, MMR, MR, MH
Communication protocols	ITU-T T.30
Transmission speed	Approx. 3 sec. per page
Scanning mode	Text, Text/Photo, Photo, B&W only
Gray scale	256 steps

- 2nd Line for FAX Unit GD-1260 •Wireless LAN Module GN-1060
- Wireless LAN Antenna GN-3010 •Harness Kit For Coin Controller GQ-1200
- Data Overwrite Enabler GP-1070 •EFI Controller GA1310
- e-BRIDGE ID Gate KP-2004 for HID/KP-2005 for MIFARE •Meta Scan Enabler GS-1010
- IPSec Enabler GP-1080 •External Interface Enabler GS-1020
- e-BRIDGE Job Separator •e-BRIDGE Job Build •e-BRIDGE Re-Rite GB-1280 •EFMS
- Exit Tray KA6550ET •Door Lock Type III

ISO 9001 and ISO 14001 Certifications

These highly acclaimed certifications are recognised worldwide as measures of top quality and environmental management excellence. They are awarded to manufacturers for facilities and practices meeting strict standards set by the Geneva based International Standardization Organization. To date, four copier sales affiliates and all Toshiba TEC manufacturing facilities where copiers, accessories, supplies and parts are produced have received ISO 9001 certification, while four copier sales affiliate and all Toshiba TEC manufacturing facilities have received ISO 14001 certification – even more reasons to count on Toshiba

Microsoft and Windows® are registered trademarks of Microsoft Corporation in the United States and/or other countries. Adobe® PostScript® Level 3™ is a registered trademark of Adobe Systems, Inc. Mac OS® is a registered trademark of Apple Inc. EFI, Fiery and the Fiery logo are registered trademarks of Electronics for Imaging, Inc. in the U.S. Patent and Trademark Office and/or certain other foreign jurisdictions. All other brand and/or product names are trademarks of their respective owners. This brochure was compiled based on information that was accurate prior to product launch. Product design and specifications are subject to change without notice. The colour(s) of the actual product may vary from the colour(s) shown in this brochure. No part of this material may be used or reproduced in any manner whatsoever without permission. 1GB is equivalent to 1 billion bytes. Days for function availability may differ by region. "e-filing" is an abbreviation of "electronic filing". Warm-up time and print speed may vary depending on the operating environment. ©2008 TOSHIBA TEC CORPORATION All rights reserved. As an ENERGY STAR Partner TOSHIBA TEC CORPORATION has determined that this multifunctional device model meets the ENERGY STAR guidelines for energy efficiency.

TOSHIBA

Leading Innovation >>>

TOSHIBA (AUSTRALIA) PTY LIMITED

ABN 19 001 320 421
Building C, 12-24 Talavera Road, North Ryde, NSW 2113
Tel: (02) 9887-6000 Fax: (02) 9815-6274

New Zealand Office
58 Lunn Avenue, Mt Wellington, Auckland, NZ
Tel: (9) 570-8530 Fax: (9) 570-8930

www.eid.toshiba.com.au
www.eid.toshiba.co.nz

